

Internal Coupling ICON

- For pipes with different outside diameters.
- Apart from the seal, no other materials and no special tools are required.
- The connection is permanently tight. No soiling or contamination of the soil by sewage!
- Due to the long service life, there are no additional costs for monitoring and maintenance.
- All ICON couplings are made of EPDM and V2A (1.4301) as standard.
- For the connection of PVCu pipes of nominal sizes DN 200, DN 250 and DN 400, an overrunning sleeve may also be required to meet any differences in internal diameter. This is the only way to safely bridge the diameters!



A unique coupling that seals securely on the inner walls of two pipes and is braced from the outside! The EPDM profile, together with a special tensioning mechanism, seals sewage pipes from DN 150 to DN 600 water and airtight.

Traditionally flexible couplings connect to the outside of pipelines to ensure the internal surface is free from obstruction. However, there are occasions where internal couplings are necessary and in many cases required...

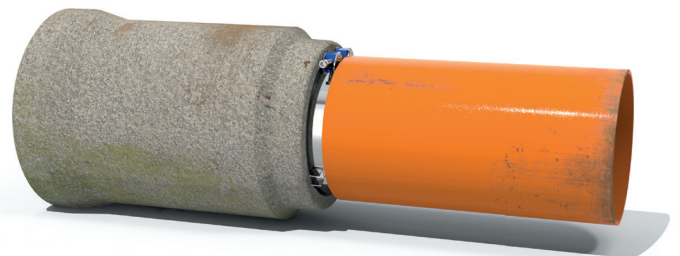
- Pipe has been encased in concrete
- Pipe surrounded by brick
- Pipe cut off at the floor or wall, leaving no stub or excess
- Damaged or flat bottom pipe
- As alternative to the SC coupling for corrugated pipes

Connecting DN150-DN600 pipes

To ensure we provide couplings that exceed water company requirements, we've designed a range of Icon Mechanical couplings. These couplings feature a strong stainless steel body that utilise strength from the connecting pipes to give strength to the joint, which provides excellent resistance to lateral shear loads, protecting pipe alignment over the joint.

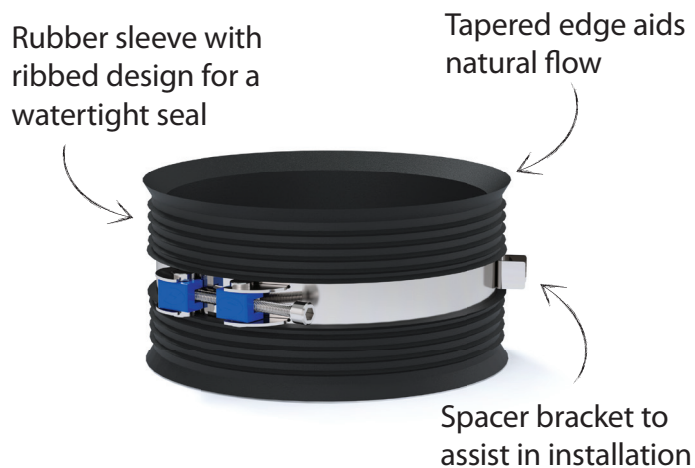
These couplings are inserted into the pipes to be connected, and tightened from the outside with a standard 8mm hex head screw bit. When tightened, the stainless steel body expands to compress the rubber sleeves against the internal surface of the pipes creating a watertight seal.

It's widely known that the external diameters of pipes within the same nominal diameter can differ but so can the internal diameters especially at larger sizes. For this reason, we manufacture Icon Mechanical to specific site requirements to ensure our customers have a coupling that's exactly as they need it. We manufacture to order within 24hrs and use rapid delivery options to get it on site when it's needed.



Fit horizontally or vertically

for above or below ground applications

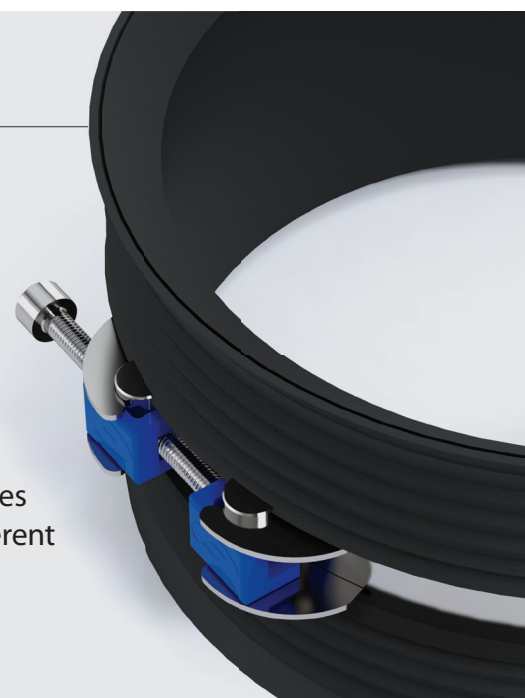


Product Code	ICXXX
Description	Fernco Icon Mechanical Coupling
Size Range	150 - 600mm
Material	EPDM 1.4301 (V2A) Stainless Steel
Pressure Rating	0,6 bar
Jetting Resistance	180 bar
Temperature Range	-50°C to 80°C constant, 100°C intermittent
Tightening Torque	15Nm
Standards	DIN EN 681-1:1995 DIN EN 16397-1

Features



Interchangeable bushes to accommodate different internal diameters



Article No.	Size DN	Inside Diameter (mm)	Torque (Nm)
IC150	150	149 - 153	15
IC200 KG2000	200	184 - 188	15
IC200 KG	200	188 - 192	15
IC200	200	198 - 202	15
IC200 KG (incl. drainage socket orange/brown)	200	198 - 202	15
IC200 PP/KG2000 (incl. drainage socket green)	200	198 - 202	15
IC250	250	248 - 252	15
IC250 KG (incl. drainage socket orange/brown)	250	248 - 252	15
IC250 PP/KG2000 (incl. drainage socket green)	250	248 - 252	15
IC300	300	299 - 303	15
IC300 KG2000 (incl. bush)	300	294 - 297 / 299 - 302	15
IC400	400	398 - 402	15
IC400 PP/KG2000 (incl. drainage socket green)	400	398 - 402	15
IC500	500	498 - 502	15
IC600	600	598 - 602	15

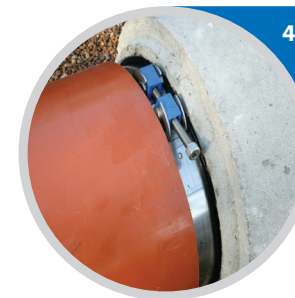


Installation

1. Ensure a defect free surface. For concrete pipes, lubricate the inside surface.
2. Place the coupling into the end of the pipe that is already laid in the ground, ensuring that the tightening device(s) is (are) positioned correctly.
3. Push the coupling into the pipe until the tightening and positioning brackets abut the pipe face.
4. Present the second pipe to the coupling, ensuring it is centred and aligned, and push it fully up to the tightening and positioning brackets.
5. Tighten the M10 bolt(s) up to 15Nm.



Watch the installation video
at www.fernco.eu



General Information

Quality, Standards and Approvals

Fernco has been certified by the British Standards Institution (BSI) as a company of assessed capability, with a quality management system which meets the requirements of BS EN ISO 9001:2015

The Fernco Group are the leaders in wastewater connection innovation; utilising the most advanced methods and techniques for precision-manufactured products, all of which comply with or exceed relevant British and European standards to ensure reliability and sustainability.

Environment

Fernco operate Environmental Management Systems which are certified to ISO 14001: 2015.

Supply

Fernco are proud members of the Builders Merchants Federation (BMF). All Fernco products are supplied through a national and global network of distribution and merchant partners. For stockist details, contact Fernco.

Technical Department:

Tel: +49 (0)5651 2296423

Email: roland.mertens@fernco.de

Enquiries and Orders

Tel: +49 (0)5651 2296400

Email: sales@fernco.de