

# Inside/Outside-Adaptor

Fig. Clay Pipe

Quick and  
easy pushfit  
connection

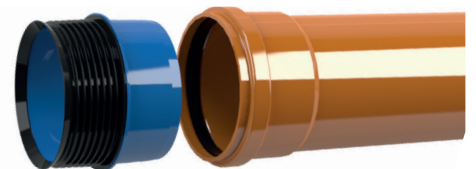
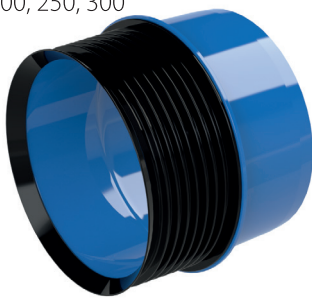
The Fernco Inside/Outside-Adaptor connects all pipes that are circular on the inside, such as concrete pipes with flat-base, reinforced pipes or wall ducts.

The adaptor consists on one side of an inner sleeve made of an impact-resistant ABS material with a lip seal that is inserted into a defined pipe or borehole. The opposite side simulates the spigot end of a commercially available plastic pipe (e.g. KG / KG2000).

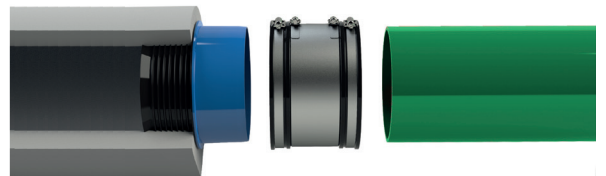
## Application examples

### Inside diameter

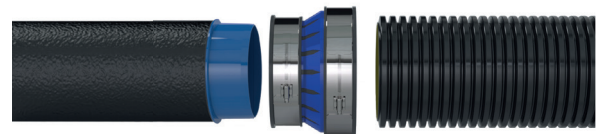
DI 100, 125, 150, 200, 250, 300



Direct connection with KG socket



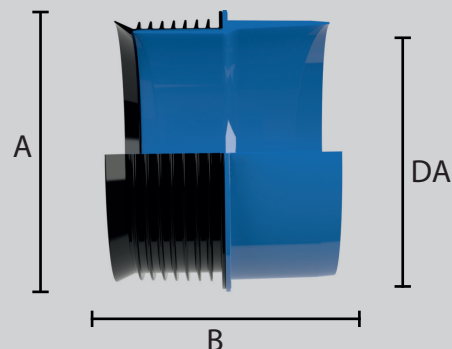
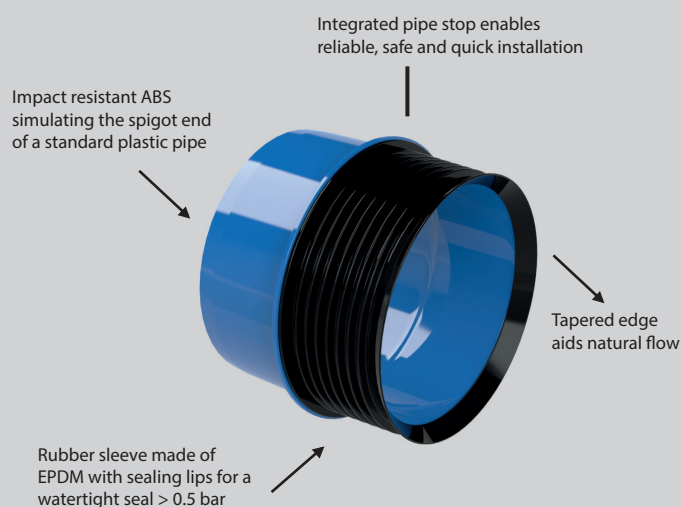
Connection to pipe spigot using standard coupling  
SC type 2B with or without bush...



...or connection with 2B1 universal coupling All-In-One

For **pressureless** connections use **AC** adaptorcouplings  
or **DC** drainage couplings.

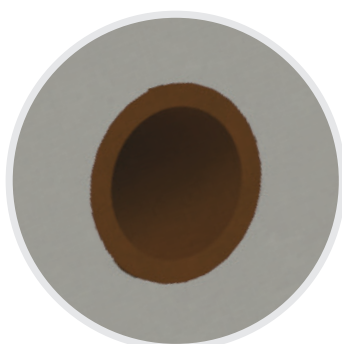
## Product details



- Pushfit connection - no tools required
- Easy installation - within minutes
- Safe against shear loads
- No cleaning of the outside surfaces required.

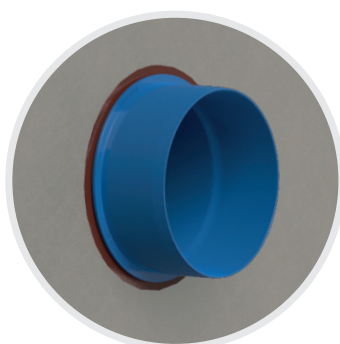
## Easy installation

### Step 1



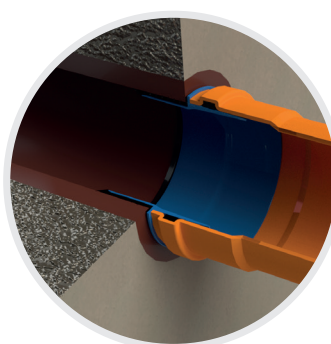
Remove any deposits and clean the inside surface of the pipe and apply some of the lubricant supplied to the inside of the pipe/borehole.

### Step 2



Push the IA-Adaptor up to the product's pipe stop into the pipe/borehole.

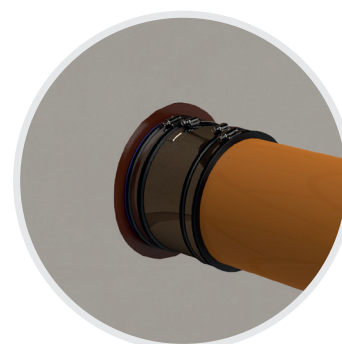
### Step 3a



Slide the socket of the plastic pipe to the other side of the adaptor.

or

### Step 3b



When installing the I/A-Adaptor in conjunction with a coupling, the second side of the adaptor is used as the pipe plain end.

**Ensure that the tapered edge on the rubber sleeve does not fold back when inserting into the pipe.**

Note: This product is designed for connecting pipes with the same inside diameter.  
The Adaptor is inserted 82 mm on each side into the pipes to be connected.  
Visit our website for more information about our internal couplings or contact our sales department.

Article No.	Size DN	Inside Diameter DI (mm)	Spigot DA (mm)	Width (mm)	Outer Diameter (mm)	Net Weight (kg)
IA100	100	99 - 103	110	125	130	0,30
IA125	125	123 - 127	125	170	145	0,50
IA150	150	148 - 153	160	170	180	0,60
IA200	200	198 - 202	200	175	220	0,80
IA225-250	225/250	220 - 225	250	210	270	1,60
IA250	250	248 - 252	250	175	270	1,30
IA300	300	298 - 302	315	175	333	1,50

\* Connects pipes of differing diameters